



Finishing Products
Division of RPM Wood Finishes Group, Inc.

PO Box 22000 Hickory, NC 28603
1-800-545-0047
www.mohawk-finishing.com

Pro-Mark® Marker Color Guide



M267-0001
Black



M267-0003
Natural Ash



M267-0004
Light Oak



M267-0063
Honey Maple



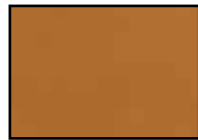
M267-0081
Natural Amber



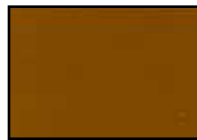
M267-0094
Warm Brown
Walnut



M267-0194
Antique Maple



M267-0207
Medium Walnut/
Brown Pecan



M267-0208
Old World
Walnut



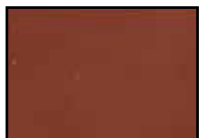
M267-0209
Extra Dark
Walnut



M267-0223
Black Brown



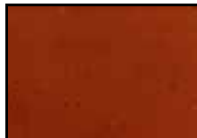
M267-0224
Plum Black



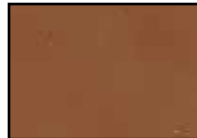
M267-0227
Dark Red
Mahogany



M267-0246
Red Brown
Mahogany



M267-0249
Perfect Brown



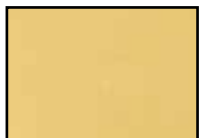
M267-0252
Brown Walnut/
Light Oak



M267-0266
Newport-
Ebonized Cherry



M267-0321
Light Natural
Oak



M267-0337
Golden Oak



M267-0355
Medium Oak



M267-0363
Dark Red
Walnut



M267-0364
Heartwood
Walnut



M267-0365
Warm Walnut



M267-0381
Cherry/Walnut



M267-0385
Deep Cordovan



M267-0387
Mahogany



M267-0388
Cherry/
Fruitwood



M267-0406
Salem Maple



M267-0408
Cherry



M267-0411
Nutmeg



M267-0418
Mocha Brown



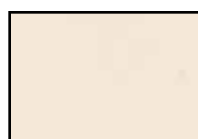
M267-0456
SY Green



M267-0457
SY Red



M267-0474
Warm Oak



M267-0477
Natural Maple



M267-0479
Maple Glaze



M267-0484
Brown Paprika



M267-1478
Van Dyke
Brown



M267-1516
Pine



M267-2052
Medium Dark
Oak

Z115-3030
Rev. 8-10

Note: Colors are approximate representations of actual colors using modern process techniques. Variations may occur.



MOHAWK
Finishing Products

Division of RPM Wood Finishes Group, Inc.
PO Box 22000 Hickory, NC 28603
1-800-545-0047
www.mohawk-finishing.com

Pro-Mark® Markers

Our most versatile and best selling markers! Perfect for:

- Deliver touch-up
- Backroom furniture store touch-up
- Kitchen cabinet installers
- Field technicians
- Factory line



| Product Number | Product Name | New Asst #1 M267-1202 | New Asst #2 M267-1204 | New Asst #3 M267-1206 | New Asst #4 M267-1208 | New Asst #5 M267-3600 | New Pouch Asst M267-2680 |
|----------------|---------------------------|--------------------------|--------------------------|--------------------------|--------------------------|--------------------------|-----------------------------|
| M267-0001 | Black | | | | | | |
| M267-0003 | Natural Ash | | X | | | X | X |
| M267-0004 | Light Oak | | | X | | X | X |
| M267-0063 | Honey Maple | X | X | | | X | X |
| M267-0081 | Natural Amber | X | X | | | X | |
| M267-0094 | Warm Brown Walnut | X | | | X | X | |
| M267-0194 | Antique Maple | X | | X | | X | |
| M267-0207 | Medium Walnut/Brown Pecan | | | | X | X | X |
| M267-0208 | Old World Walnut | X | | X | | X | |
| M267-0209 | Extra Dark Walnut | | | X | | X | X |
| M267-0223 | Black Brown | | | | | | X |
| M267-0224 | Plum Black | | | | X | X | |
| M267-0227 | Dark Red Mahogany | | | | X | X | X |
| M267-0246 | Red Brown Mahogany | | X | | | X | X |
| M267-0249 | Perfect Brown | | | X | | X | X |
| M267-0252 | Brown Walnut/Light Oak | | | X | | X | |
| M267-0266 | Ebonized Cherry | | | | X | X | |
| M267-0321 | Natural Light Oak | | X | | | X | X |
| M267-0337 | Golden Oak | X | | | X | X | X |
| M267-0355 | Medium Oak | | | | X | X | X |
| M267-0363 | Dark Red Walnut | | X | | | X | X |
| M267-0364 | Heartwood Walnut | | | X | | X | |
| M267-0365 | Warm Walnut | | | | X | X | |
| M267-0381 | Cherry/Walnut | X | X | | | X | |
| M267-0385 | Deep Cordovan | | X | | | X | |
| M267-0387 | Mahogany | | | | X | X | X |
| M267-0388 | Cherry/Fruitwood | | | X | | X | X |
| M267-0406 | Salem Maple | | | | X | X | |
| M267-0408 | Cherry | | | X | | X | X |
| M267-0411 | Nutmeg | | X | | | X | X |
| M267-0418 | Mocha Brown | X | | X | | X | X |
| M267-0456 | SY Green | | | | | | |
| M267-0457 | SY Red | | | | | | |
| M267-0474 | Warm Oak | X | | X | | X | X |
| M267-0477 | Natural Maple | X | | | X | X | X |
| M267-0479 | Maple Glaze | X | | X | | X | X |
| M267-0484 | Brown Paprika | X | X | | | X | |
| M267-1478 | Van Dyke Brown | | X | | | X | X |
| M267-1516 | Pine | | | | X | X | X |
| M267-2052 | Medium Dark Oak | | X | | | X | X |

Z115-3030
Rev. 8-10